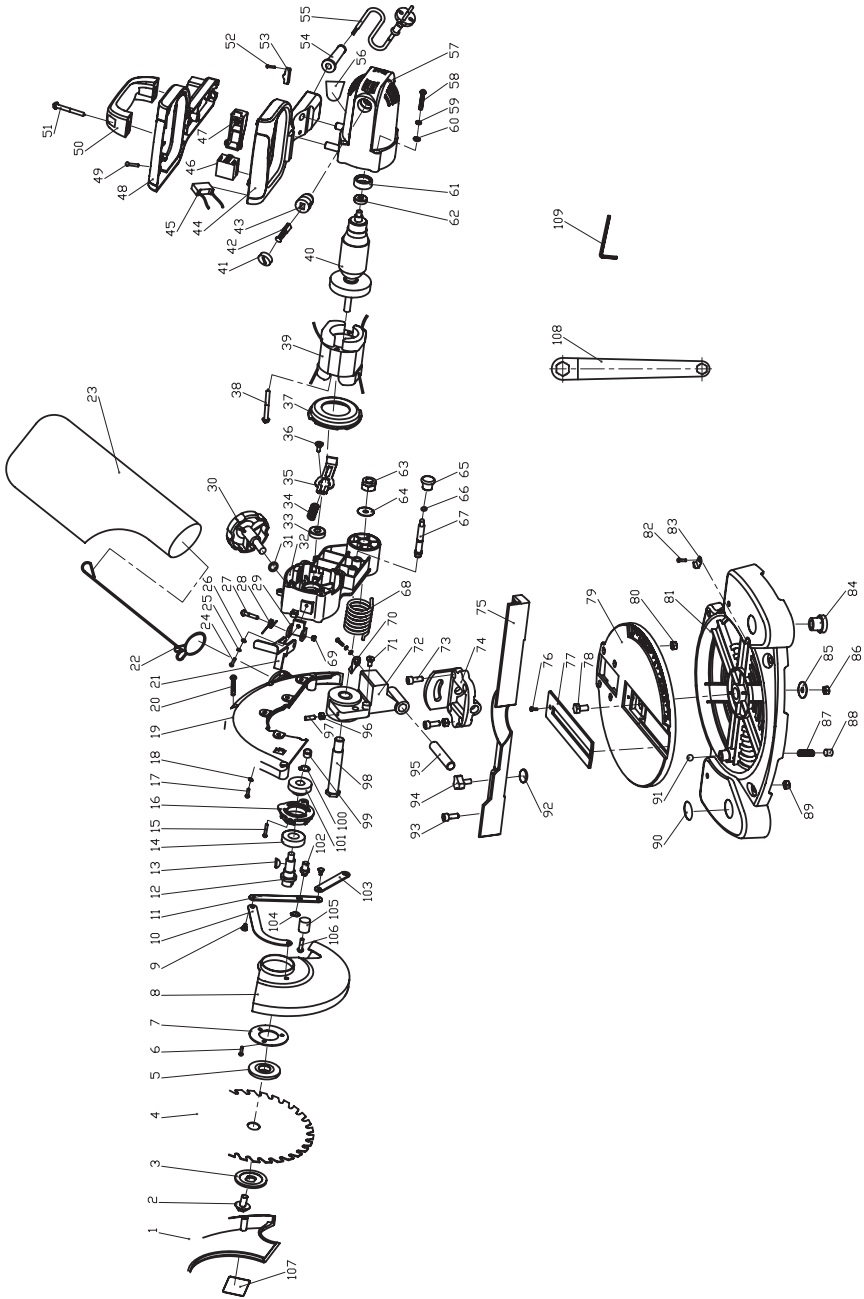


EXPLODED VIEW and SPARE PARTS LIST



No.	Part name	No.	Part name
1	Left cover	41	Brush holder cap
2	Hex bolt M8×15-L	42	Carbon brush
3	Upper pressing plate	43	Brush holder
4	Saw blade	44	Handle
5	Lower pressing plate	45	Capacitance 0.33uF
6	Chamfer head screw M4×10	46	Switch
7	Bearing cover	47	Switch cover
8	Self-closing guard	48	Upper handle
9	Rivet	49	Self-tapping screw ST4×22
10	Pole C	50	Back handle
11	Pole B	51	Self-tapping screw ST4.8×70
12	Output spindle	52	Self-tapping screw ST4×16
13	Woodruff key 4×13	53	Cable pressboard
14	Big gear	54	Cable jacket
15	Chamfer head screw M5×16	55	Cable
16	Gear box cover	56	Mark
17	Screw M4×8	57	House
18	Plane washer Φ4	58	Screw M4×25
19	Right cover	59	Spring washer Φ4
20	Self-tapping screw ST4×30	60	Plane washer Φ4
21	Control pole	61	Bearing cover
22	Wire holder	62	Bearing 627
23	Dust collecting bag	63	Hex locknut M12
24	Screw M4×10	64	Washer 24×Φ12
25	Spring washer Φ4	65	Locking knob
26	Plane washer Φ4	66	O-Ring Φ4.5×Φ1.8
27	Screw M5×30	67	Shaft
28	Spring	68	Spring
29	Knob holder	69	Hex locknut M5
30	Locking knob	70	Finger
31	Washer Φ16×Φ8	71	Socket screw M5×10
32	Aluminum protective cover	72	Bended arm
33	Bearing 608	73	Socket screw M6×16
34	Self-locking spring	74	Base of bended arm
35	Self-locking pole	75	Backboard
36	Screw M4×10.5	76	Chamfer head screw M4×6
37	Wind guard	77	Protective board for saw blade
38	Self-tapping screw ST4×55	78	Hex bolt M6×25
39	Stator	79	Saw table
40	Rotor	80	Square nut M6

No.	Part name	No.	Part name
81	Base	101	Big gear
82	Self-tapping screw ST4×14	102	Screw M8×10
83	Finger	103	Pole A
84	Base pad	104	Circlip $\Phi 6$
85	Washer $\Phi 22 \times \Phi 6$	105	Rubber ring
86	Hex locknut M6	106	Screw
87	Spring	107	Mark
88	Socket screw M10×10	108	Socket spanner
89	Hex nut M6	109	Inner hexagon spanner
90	Warning mark	110	
91	Steel ball S $\Phi 8$	111	
92	Cushion	112	
93	Socket screw M6×30	113	
94	Screw M6×13	114	
95	Spindle	115	
96	Hex nut M5	116	
97	Hex bolt M5×16	117	
98	Spindle	118	
99	Oil bearing $\Phi 12 \times \Phi 8 \times 10$	119	
100	Circlip for shaft $\Phi 12$	120	